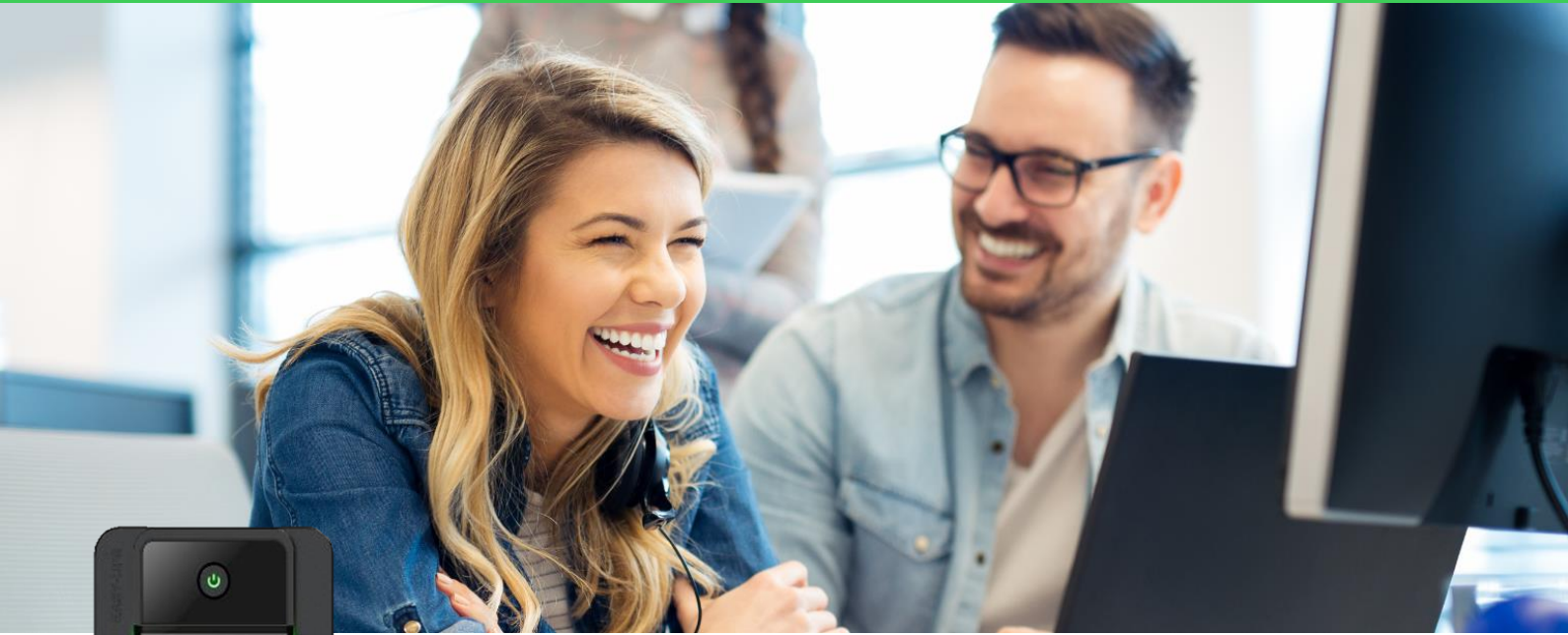


Advanced Power Protection

APC Back-UPS BX Series 750VA – 2200VA



APC™ Back-UPS™ BX series is a cost effective power protection solution for home and home office environments.

The series comprehensive VA range with premium features further enables single UPS capabilities

Ideal Power Protection for the following environments and devices:



Home Office

Work from home & remote learning devices

- Modem / Router
- PC Desktop Computer
- PC Monitor
- Network-attached Storage



Home Entertainment

Living room essentials

- Modem / Router
- TV Box
- Television
- Music Speaker



Smart Home

IoT electronics

- Modem / Router
- Smart Speaker
- Home Security / Surveillance Camera

www.apc.com

Life Is On

APC
by Schneider Electric

Protect your devices from power surges and outages

? How does a UPS protect my uptime?

Power Surge Protection



Stabilizes the main electrical line voltage to your devices

Refined Power Supply



Protects computer and connected devices from dips and spikes caused by lightning

Instant Power



Instant power to your equipment the exact moment the power goes out

Battery backup is key to home continuity



The electronic devices you rely on for communication, security and entertainment depend on a stable network connection,

Ensure reliable uptime and clean power for your critical devices.

Comprehensive Power Capacity Range



Models ranging from 750VA-2200VA; choose a solution aligned with your specific application and runtime needs

Visibility and Manageability Software



In the event of an extended power outage, prevent potential data loss or corruption with PowerChute Personal Edition Software

Form Factor:

Compact for office and business spaces (BX750MI-GR: 160 x 120 x 355 mm).

Outlets

4 battery backup with surge protection outlets

Functional ease-of-use

Front panel LED green lights to easily tell the functional status

1Gb Network Protection

Safeguards your equipment and valuable files from “back door” surges traveling along data lines without sacrificing internet speed

Automatic Voltage Regulation (AVR)

Instantly corrects incoming utility power without utilizing the battery, saving the battery for when it is needed most

APC Back-UPS technical specifications

BX Series



| | BX750MI-GR | BX950MI-GR | BX1200MI-GR | BX1600MI-GR | BX2200MI-GR |
|----------------------------------|--|------------------------|------------------------|------------------------|------------------------|
| Output | | | | | |
| Power Rating | 750VA/410W | 950VA/520W | 1200VA/650W | 1600VA900W | 2200VA/1200W |
| Nominal Output Voltage | 230V | | | | 1.1.83; 1.1.86 |
| Output Voltage (On Battery) | 230+/-10% @ 100% load | | | | |
| Output Frequency (Hz) | 50/60HZ +/-0.5Hz | | | | |
| Topology | Line Interactive | | | | |
| Waveform Type | Stepped approximation to a sinewave | | | | |
| Output Connections | 4 Shuko Battery Backup | 4 Shuko Battery Backup | 4 Shuko Battery Backup | 4 Shuko Battery Backup | 4 Shuko Battery Backup |
| Input | | | | | |
| Nominal Input Voltage | 230V | | | | |
| Input Connections | CEE7 | | | | |
| Input Cord | 1.2 m | | | | |
| Input Frequency | 50 Hz or 60 Hz | | | | |
| USB Charging | No | | | | |
| Batteries & runtime | | | | | |
| Battery Type | Maintenance-free sealed Lead-Acid battery with suspended electrolyte : | | | | |
| Typical Backup Time at ½ Load | 8.5 min | 6.5 min | 5 min | 6.5 min | 8.5 min |
| Typical Backup Time at Full Load | 1 min | 1 min | 1 min | 1 min | 1 min |
| Typical Recharge Time | 6 hours | 6-8 hours | 8 hours | 8 hours | 8 hours |
| Communications & Management | | | | | |
| LED Indicators | Visual LED indicators | | | | |
| Data Line Protection | RJ 45 Gigabit | | | | |
| Interface Ports | 273 | | | | |
| Software | PowerChute Personal Edition | | | | |
| Physical | | | | | |
| Dimensions (HxWxD) mm | 160 x 120 x 355 | | 190 x 140 x 390 | | |
| Weight (kg) | 5.4 | 6.1 | 7.6 | 10.3 | 12.3 |
| Environmental | | | | | |
| Operating Environment | 0 - 40 °C | | | | |
| Operating Relative Humidity | 0 - 95 % | | | | |
| Operating Elevation | 0-3000 meters | | | | |
| Storage Temperature | 15 - 40 °C | | | | |
| Storage Relative Humidity | 0-95% | | | | |
| Conformance | | | | | |
| Approvals | CB Meet EN62040-1 / CE / IEC-62040-1 / IEC-62040-2 | | | | |
| Standard warranty | 2 years repair or replace | | | | |
| RoHS Compliant | Yes | | | | |

Life Is On

